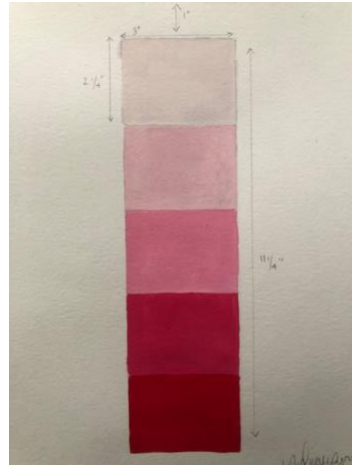


Monochromatic Tint Value Scale: Step-By-Step Instructions

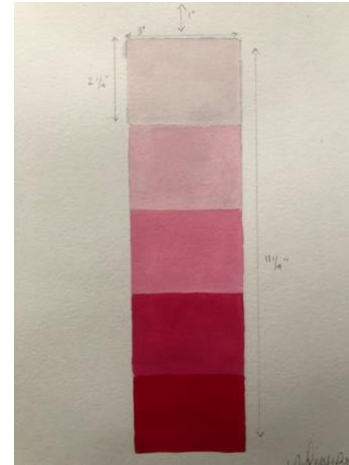


Materials Needed:

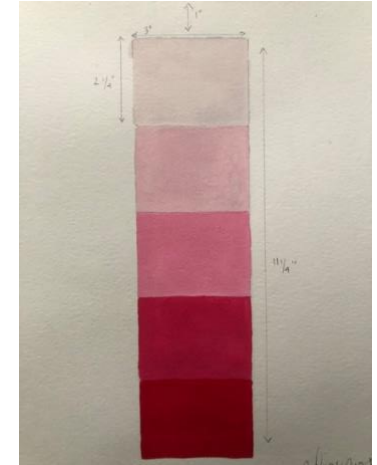
- Watercolor paper
- Paint (white + any color)
- Wooden Pencil
- Ruler
- Eraser
- Rag
- Water Cup
- Pallet



1. Create your scale.
2. Using 11x 15" Watercolor paper.



- Find center (5.5") Measure down 1" from the top of the paper.
- Now measure across and mark inch 4 and 7.



- Measure out (down) 11 1/4" on both sides.
- Make a mark ever 2 1/4" down the 11 1/4" on each side and connect the dashes w parallel lines. You should end up with 5 boxes.

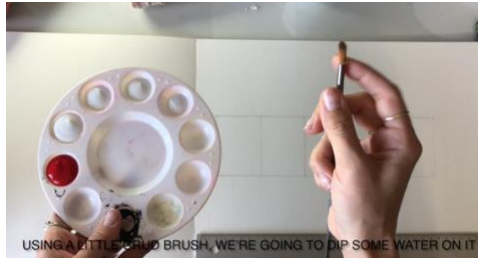


By completion of this project, you will have created a Tint Value Scale of the Primary color Red! YAY!
We will do this for each Primary color, with blue and yellow up next. We will **NOT** be tapping our edges, this is b/c we want to gain control of this medium. We will **mix** four colors for the 5 boxes. Box 5 will contain the true Primary Red, we don't mix this – this is out of a bottle.

Monochromatic Tint Value Scale: Step-By-Step Instructions



- 3.** Let's grab our paint and pallets
- Pour white into the pallet. 4 wells worth. Going from the most, little less, less than that and the absolute least.



- 4.** Next pour a whole well of any color. My example is Primary Red.
- 5.** Grab a mixing brush.



- 6.** Begin mixing with these steps:
- Dip brush in red and scope it into the *smallest* amount of white poured.
 - Mix until all white parts are gone and have turned into a light Red.
 - Once white has turned into light Red and no white is visible, take the color you just made and scoop it into the next smallest amount of white. (This will repeat until all white well have turned a gradual red)



- Repeat this with *each* white well. Dipping the color you just made into the *next* white well.



Monochromatic Tint Value Scale: Step-By-Step Instructions



7. Cupping hand so only two wells are visible, making sure there are indeed color differences. Repeat with each two



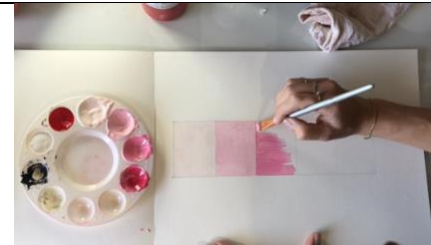
This helps to see the differences better in-between each color.



8. Begin painting!
- Starting with the lightest red at the top of the paper.
- Begin filling in, ALWAYS pointing your paint brush towards the line you do not want to cross. (As seen above)
Fill in edges and work your way to the middle

CLEAN BRUSH IN-BETWEEN COLORS

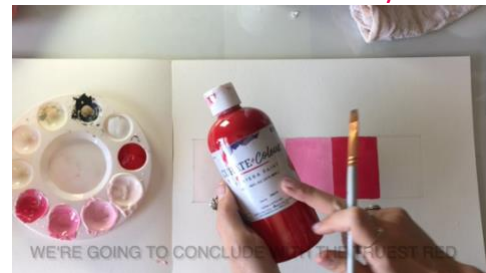
- This step will repeat until all 5 boxes are filled.



- **AGAIN, ALWAYS** point your paint brush towards the line you do not want to cross. (As seen above and below)



Conclude with the Primary Red.



9. Sign and date your work!



Now you have created a **Monochromatic Tint Value Scale** and did not even use tape to create clean lines! What a way to show you have control of this medium! Great Job – you should be proud!